

# PAPILIO JAÏRUS.



## CHARACTER GENERICUS.

*Antennæ* apicem versus crassiores, sæpius clavato-capitatae.

Alæ (sedentis) erectæ sursumque conniventes volatu diurno.)

*Lin. Syst. Nat.* p. 744.

## CHARACTER SPECIFICUS, &c.

PAPILIO alis integerrimis fuscis; posterioribus disco albo, supra ocello, subtus duobus.

*Lin. Syst. Nat.* Gmel. p. 2277.

PAPILIO alis integerrimis fuscis, posticis disco albo, supra ocello, subtus duobus.

*Fab. sp. ins.* 2. p. 63.

DANAI FESTIVI.

# PAPILIO JAÏRUS.

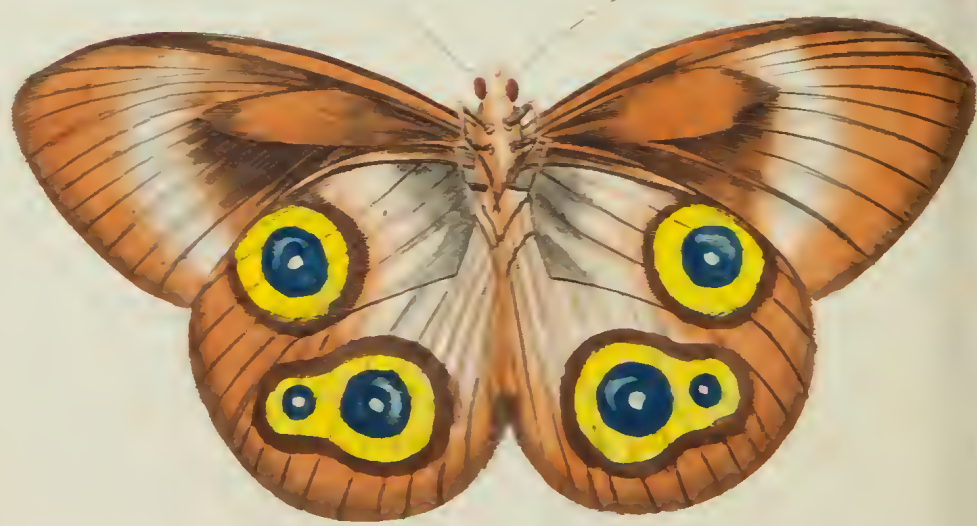
*Cramer t.* 16. A. B.

---

Indiam incolit Papilio Jaïrus, magnitudine vera in tabula depictus.







# JAÏRUS.



## GENERIC CHARACTER.

*Antennæ* generally thickening towards the extremities, and terminating in a clavated tip.

*Wings* (when sitting) erect, and meeting upwards. Flight diurnal.

## SPECIFIC CHARACTER, &c.

Brown BUTTERFLY with entire wings, a white cloud on each, an eye-shaped spot on each lower wing and two beneath.

## JAÏRUS.

*Cramer. t. 6.*

*Clerk ic. t. 29. f. 3.*

---

The *Papilio Jaïrus* is a native of India, and is represented on the plate in its natural size.